

Identifying Real-World Practice Patterns in Second-Line Treatments for Patients With Overactive Bladder Receiving Navigated or Routine Care From a US National Retrospective Database Study

Raveen Syan,¹ Jennifer Miles-Thomas,² Nitya Abraham,³ Lei Luo,⁴ Diane K. Newman,⁵ Mariana Nelson,⁶ Ekene Enemchukwu⁷

¹University of Miami, Miller School of Medicine, Miami, FL, USA; ²Eastern Virginia Medical School, The Devine-Jordan Center for Reconstructive Surgery and Pelvic Health, Virginia Beach, VA, USA; ³Montefiore Medical Center, Bronx, NY, USA; ⁴AbbVie, Madison, NJ, USA; ⁵Perelman School of Medicine, University of Pennsylvania, Penn Center for Continence and Pelvic Health, Division of Urology, Philadelphia, PA, USA; ⁶AbbVie, Lake Bluff, IL, USA; ⁷Stanford Multidisciplinary Pelvic Health Center, Stanford Health Care, Redwood City, CA, USA

OBJECTIVE

To describe real-world utilization patterns of second-line pharmacological treatments for OAB stratified by those who did or did not receive navigated care

CONCLUSIONS

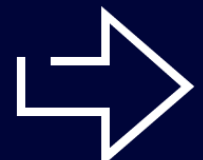


Discontinuation rates for initial second-line pharmacological treatments are high regardless of class



Navigator-based care can modestly decrease discontinuation of initial second-line therapies

For additional information or to obtain a PDF of this poster



Scan QR code or use the following link to download an electronic version of this presentation and other AbbVie 2022 SUNA scientific presentations:

<https://abbvie1.outsystemsenterprise.com/GMAEvent/Publications/Assets.aspx?ConferenceId=444>

QR code expiration: September 26, 2022

To submit a medical question, please visit www.abbviemedinfo.com

References

1. Gormley EA, et al. Diagnosis and Treatment of Overactive Bladder (Non-Neurogenic) in Adults: AUA/SUFU Guideline, 2019. <https://www.auanet.org/guidelines/non-oncology-guidelines/roscconline>. Accessed February 10, 2022.

2. Sussman D, et al. *Int J Clin Pract*. 2017;71(10-4):e12624.

3. Shaya FT, et al. *Am J Managed Care*. 2005;11(4 Suppl):S121-S129.

Presented at the Society of Urologic Nurses and Associates (SUNA), September 29 - October 2, 2022, New Orleans, LA, USA

abbvie

INTRODUCTION

- Second-line treatments for overactive bladder (OAB) include oral anticholinergic and beta-3 adrenergic medications¹
 - These OAB medications have varying levels of efficacy and can be associated with significant side effects, leading to high rates of discontinuation^{2,3}
- Navigation of care by a dedicated professional may help guide patients through the OAB clinical pathway to the appropriate therapeutic options, thus optimizing results and improving medication adherence

METHODS

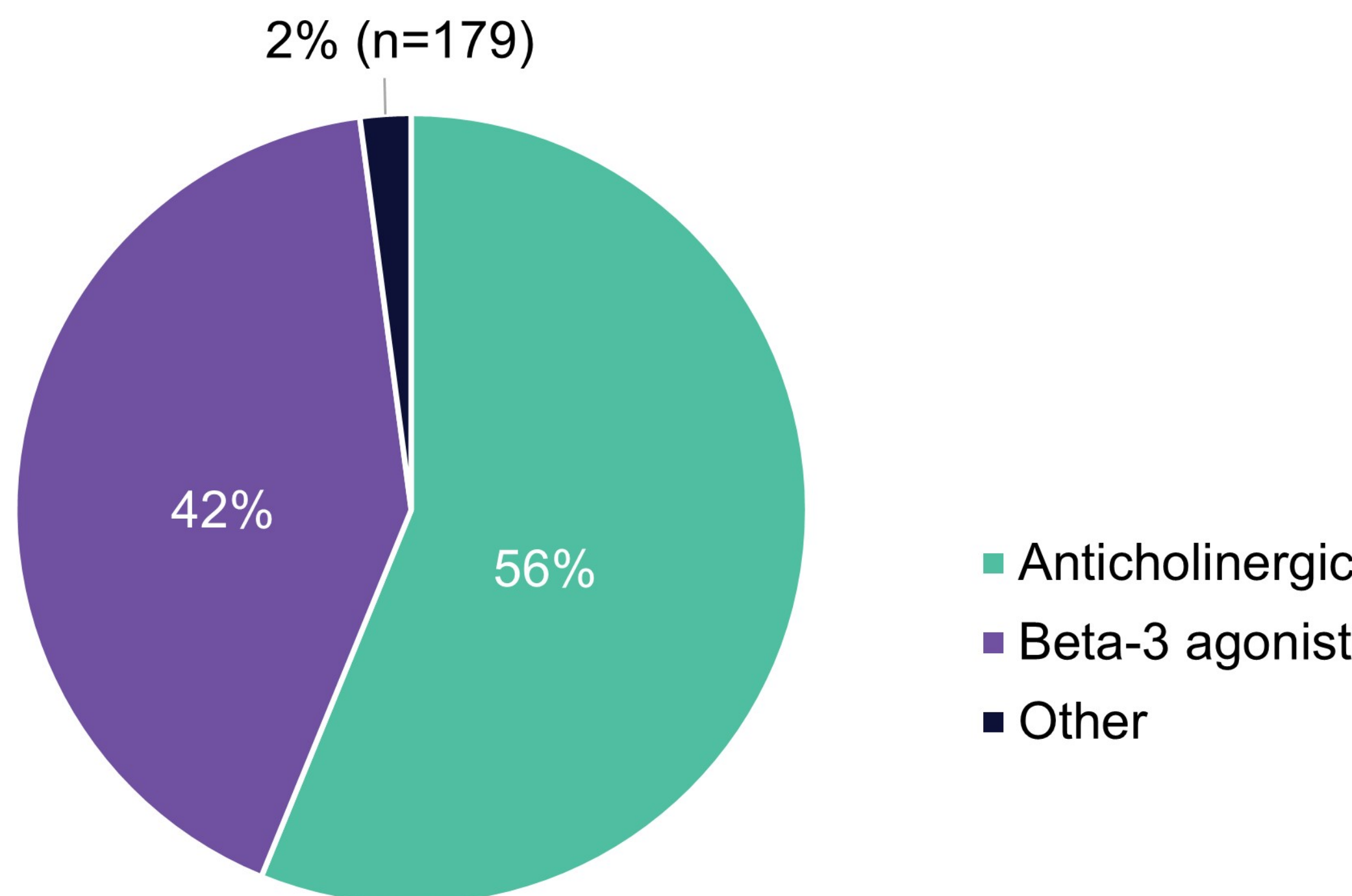
Study Design

- Retrospective observational cohort study utilizing an electronic medical records database
 - Precision Point Specialty Analytics Portal for OAB
 - Contains data for more than 90 community-based urology practices in the United States
- Included adults (aged ≥18 years) newly diagnosed and treated for non-neurogenic OAB between January 1, 2015 and December 31, 2019 with at least 2 OAB medical visits occurring ≥30 days apart

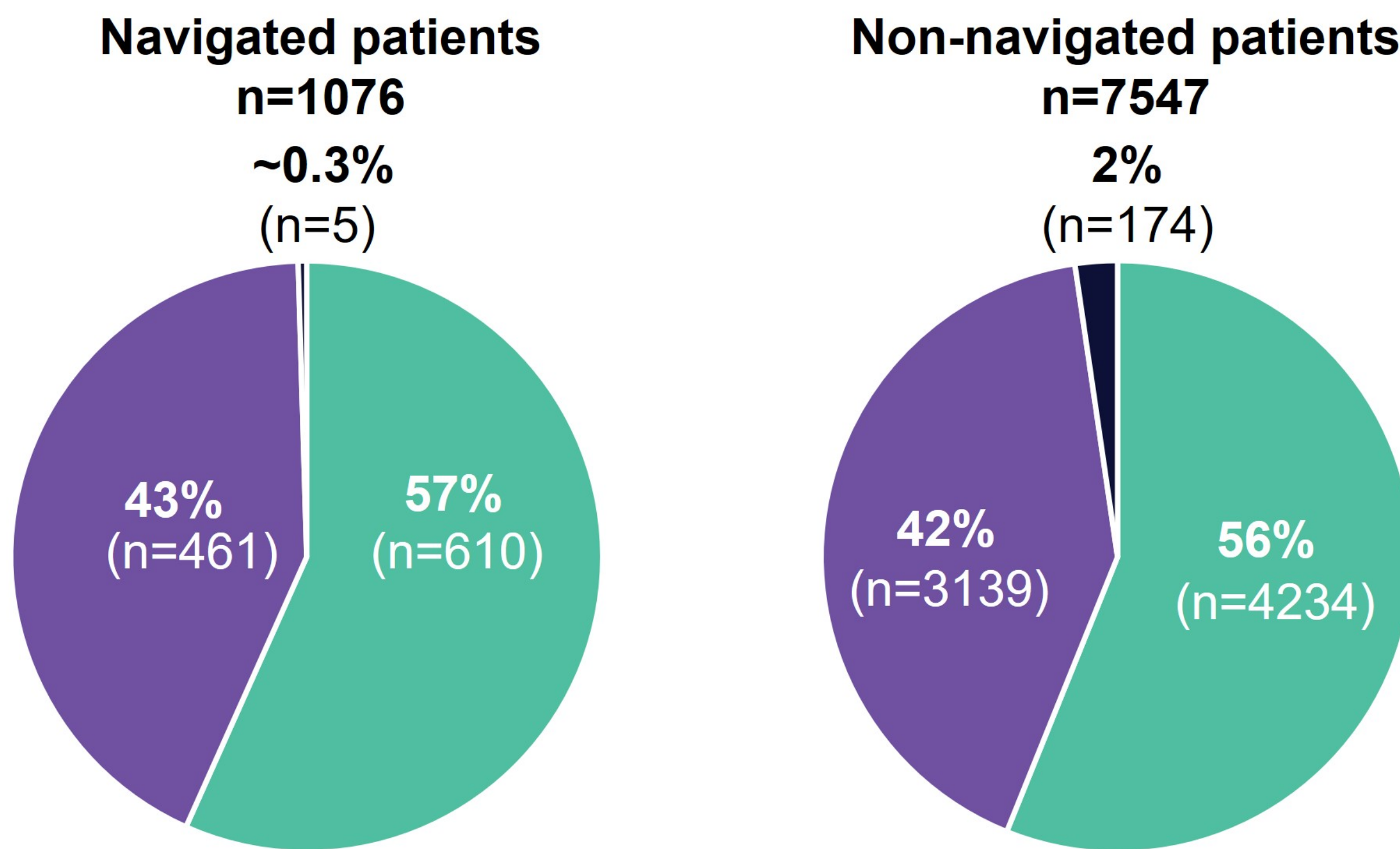
RESULTS

High Rates of Initial Second-line Pharmacologic Treatment for OAB in US Community Urology Practices

Initial second-line treatment by medication type

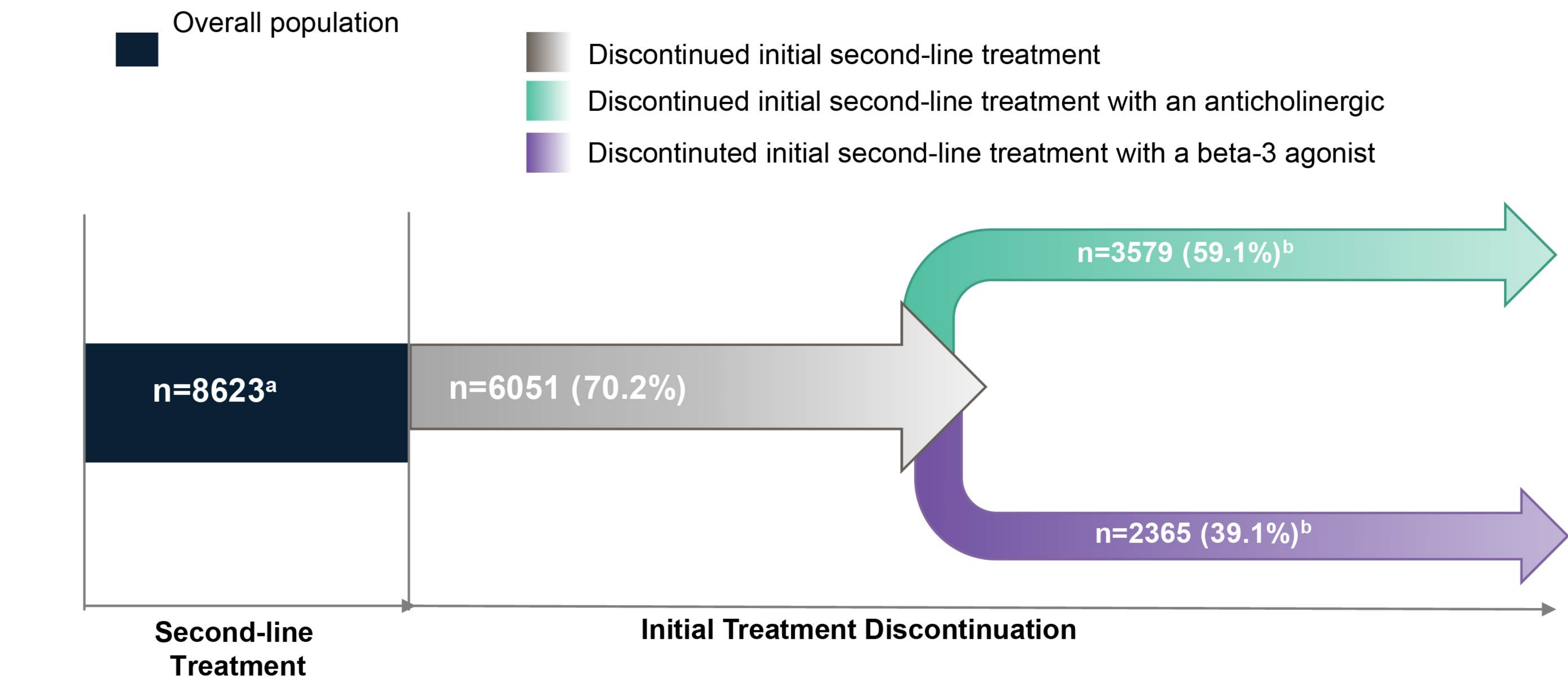


Medication types for initial second-line treatment did not differ by navigation status

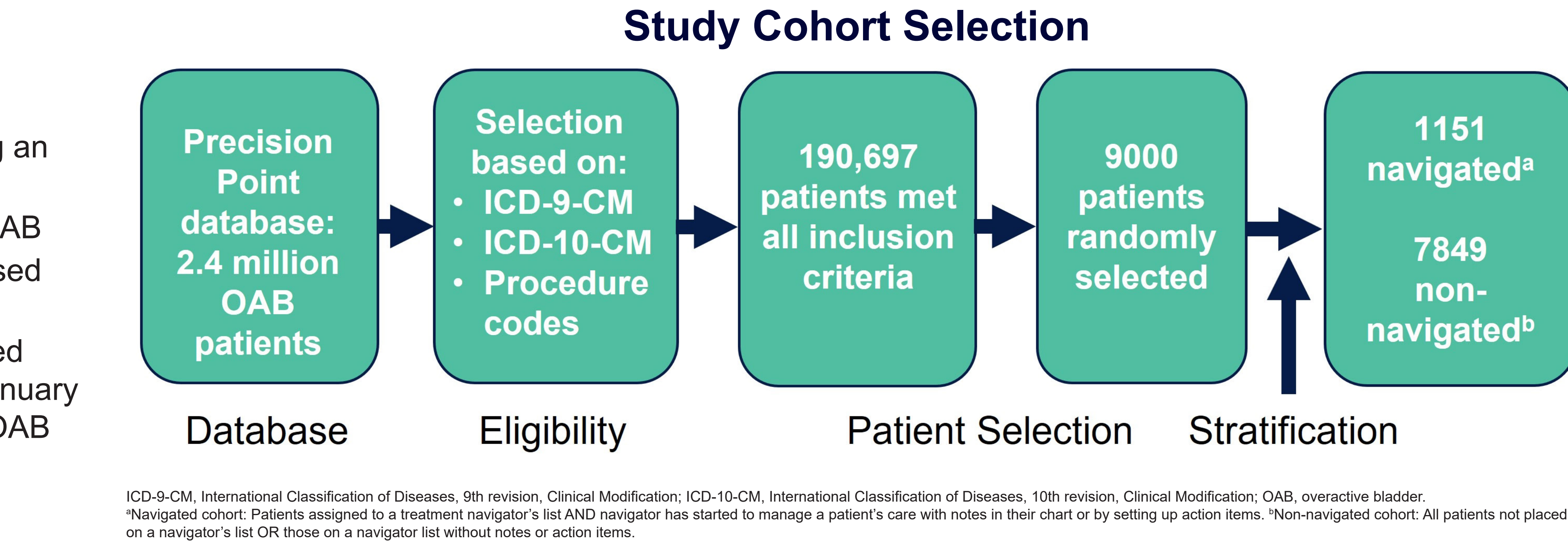


OAB, overactive bladder.

Discontinuation Rates for Patients Initiating Second-line Treatment, in Overall Population and With Either Anticholinergics or Beta-3 Agonists



^an=number of patients initiating second-line treatment in the overall population. ^bPercentages are based on total patients in the overall population discontinuing initial treatment (n=6051).



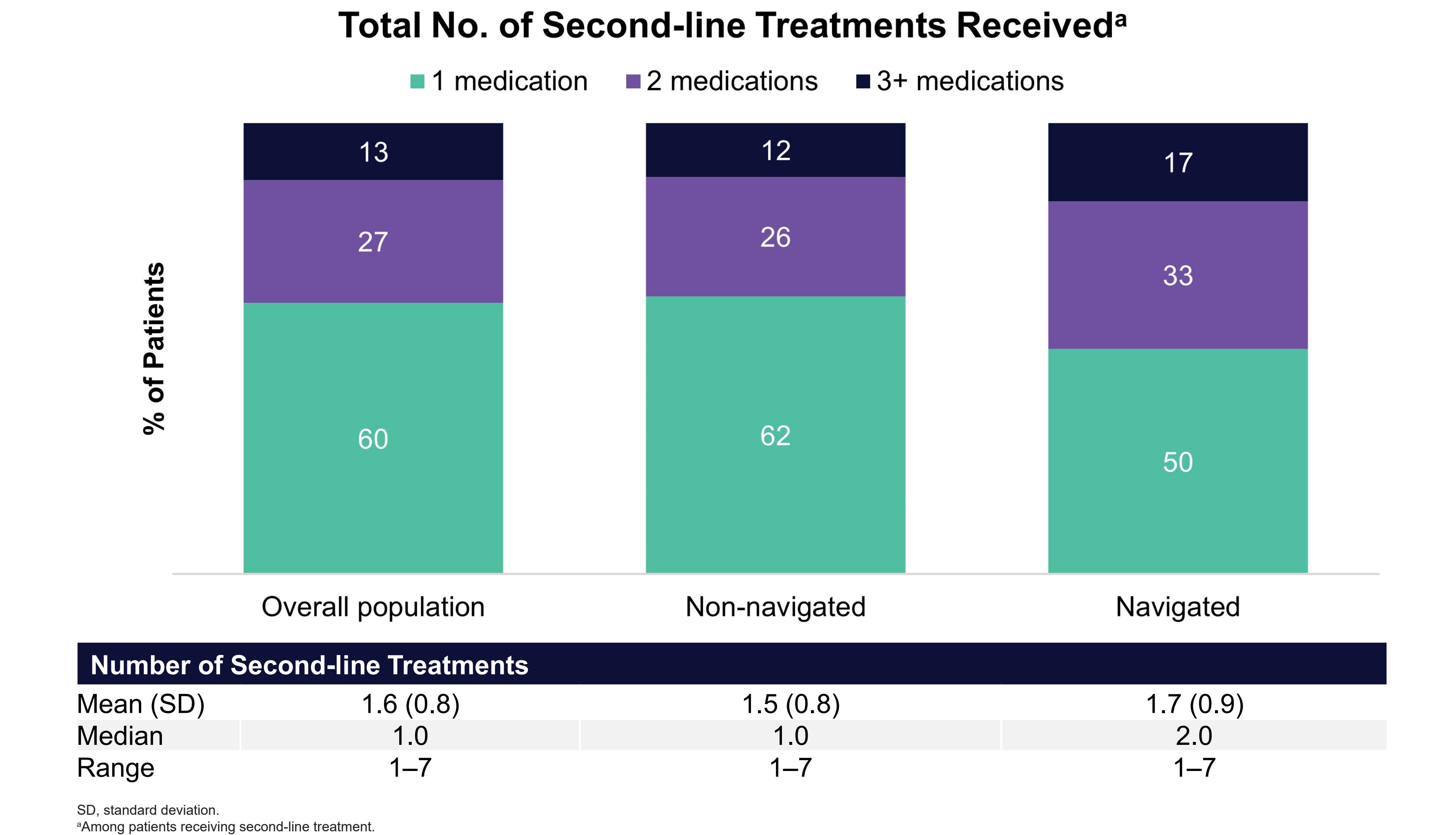
ICD-9-CM, International Classification of Diseases, 9th revision, Clinical Modification; ICD-10-CM, International Classification of Diseases, 10th revision, Clinical Modification; OAB, overactive bladder. ^aNavigated cohort: Patients assigned to a treatment navigator's list AND navigator has started to manage a patient's care with notes in their chart or by setting up action items. ^bNon-navigated cohort: All patients not placed on a navigator's list OR those on a navigator list without notes or action items.

Time to Initial Second-line Treatment Discontinuation Was Longer for Patients Receiving Navigated Care

| | Overall n=8623 | Navigated Patients n=1076 | Non-navigated Patients n=7547 | P value |
|-------------------------------------------------------|-------------------|------------------------------|----------------------------------|----------------------|
| Time to second-line treatment discontinuation, months | | | | |
| Range | 1.0–64.9 | 1.0–54.6 | 1.0–64.9 | |
| Median (IQR) | 3.9 (1.0–12.8) | 4.4 (1.7–12.8) | 3.7 (1.0–12.8) | P<0.001 ^a |
| Mean (SD) | 7.7 (9.1) | 8.2 (9.1) | 7.7 (9.1) | P<0.001 ^b |

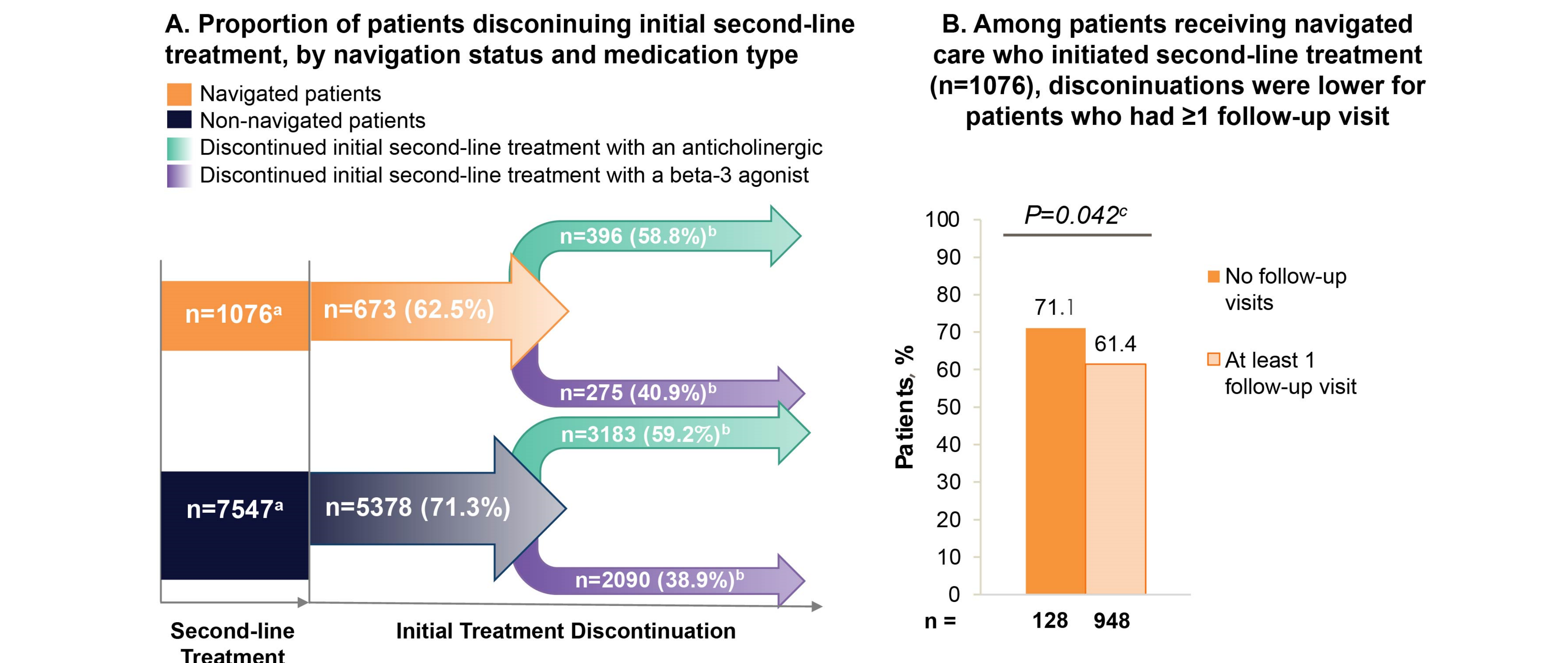
IQR, interquartile range; SD, standard deviation. ^an = number of patients in each group who initiated second-line treatment. ^bNavigated patients vs non-navigated patients based on a Wilcoxon log-rank test. ^cBased on a log-rank test using a two-sided P-value.

Overview of Second-line Pharmacologic Treatments in the Overall Population and by Navigation Status



SD, standard deviation. ^aAmong patients receiving second-line treatment.

Discontinuation Rates for Initial Second-line Treatments Were Lower in Patients Receiving Navigated Care



^an = number of patients with navigated or non-navigated care who received initial second-line treatment. ^bPercentages are based on total patients in each group (navigated or non-navigated) discontinuing initial second-line treatment (shaded arrows). ^cP value based on a two-sided Pearson's chi-square test.